

AFR5049



AFR5049



AFL5115



AFL4751



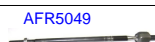
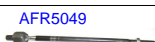
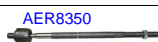
AFL4752



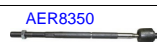
AFL5115



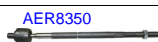
Ruitai	Description	Position	Years
AFR5049	RACK END	R/L	1999-2015
AFL5115	STABILIZER LINK	R/L	1999-2015
AFL4752	STABILIZER LINK	R	1997-2015
AFL4751	STABILIZER LINK	L	1997-2015



Ruitai	Description	Position	Years
AER8350	RACK END	R/L	1999-2016
AFR5049	RACK END	R/L	1999-2015
AET5070	TIE ROD END	OUT R/L	1999-2016
AET6538	TIE ROD END	OUT R/L	1978-2016
AFT2181	TIE ROD END	OUT R/L	1978-1999, 2006-2016
AFA4167	CONTROL ARM	UP R	1999-2016
AFA4168	CONTROL ARM	UP L	1999-2016
AFA4169	CONTROL ARM	LOW R	1999-2016
AFA4170	CONTROL ARM	LOW L	1999-2016
AFX7010	BUSH	R/L	1999-2016
AFL5115	STABILIZER LINK	R/L	1999-2015
AFL4752	STABILIZER LINK	R	1997-2015
AFL4751	STABILIZER LINK	L	1997-2015



Ruitai	Description	Position	Years
AER8350	RACK END	R/L	1999-2016
AET5070	TIE ROD END	OUT R/L	1999-2016
AET6538	TIE ROD END	OUT R/L	1978-2016
AFT2181	TIE ROD END	OUT R/L	1978-1999, 2006-2016
AFA4167	CONTROL ARM	UP R	1999-2016
AFA4168	CONTROL ARM	UP L	1999-2016
AFA4169	CONTROL ARM	LOW R	1999-2016
AFA4170	CONTROL ARM	LOW L	1999-2016
AFX7010	BUSH	R/L	1999-2016



Ruitai	Description	Position	Years
AER8350	RACK END	R/L	1999-2016
AET5070	TIE ROD END	OUT R/L	1999-2016
AET6538	TIE ROD END	OUT R/L	1978-2016
AFT2181	TIE ROD END	OUT R/L	1978-1999, 2006-2016
AFA4167	CONTROL ARM	UP R	1999-2016
AFA4168	CONTROL ARM	UP L	1999-2016
AFA4169	CONTROL ARM	LOW R	1999-2016
AFA4170	CONTROL ARM	LOW L	1999-2016
AFX7010	BUSH	R/L	1999-2016

AFL4751



AFL4752



Ruitai	Description	Position	Years
AFL4752	STABILIZER LINK	R	1997-2015
AFL4751	STABILIZER LINK	L	1997-2015

AFR5049



AFR5049



AFL5115



AFL4751



AFL4752



AFL5115



Ruitai	Description	Position	Years
AFR5049	RACK END	R/L	1999-2015
AFL5115	STABILIZER LINK	R/L	1999-2015
AFL4752	STABILIZER LINK	R	1997-2015
AFL4751	STABILIZER LINK	L	1997-2015
AFO8938	OTHER	LOW R	2006-2012
AFO8939	OTHER	LOW L	2006-2012

AFR5049



AFR5049



AFL5115



AFL5115



Ruitai	Description	Position	Years
AFR5049	RACK END	R/L	1999-2015
AFL5115	STABILIZER LINK	R/L	1999-2015
AFO8938	OTHER	LOW R	2006-2012
AFO8939	OTHER	LOW L	2006-2012

AFR5049



AFR5049



AFL5115



AFL5115



Ruitai	Description	Position	Years
AFR5049	RACK END	R/L	1999-2015
AFL5115	STABILIZER LINK	R/L	1999-2015
AFO8938	OTHER	LOW R	2006-2012
AFO8939	OTHER	LOW L	2006-2012

AFR5049



AFR5049



Ruitai	Description	Position	Years
AFR5049	RACK END	R/L	1999-2015

AFR5049



AFR5049



Ruitai	Description	Position	Years
AFR5049	RACK END	R/L	1999-2015

AFR2323



AFR2323



AET6538



AFT2180



AFT2181



AFT2181



AFT2180



AET6538



AFB2086



AFB2086



Ruitai	Description	Position	Years
AFR2323	RACK END	R/L	1978-1999
AET6538	TIE ROD END	OUT R/L	1978-2016
AFT2180	TIE ROD END	OUT R/L	1978-1999, 2001-2015
AFT2181	TIE ROD END	OUT R/L	1978-1999, 2006-2016
AFB2086	BALL JOINT	UP R/L	1978-1999

AFR2323



AFR2323



AET6538



AFT2180



AFT2181



AFT2181



AFT2180



AET6538



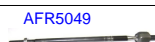
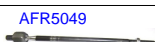
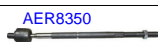
AFB2086



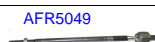
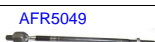
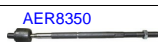
AFB2086



Ruitai	Description	Position	Years
AFR2323	RACK END	R/L	1978-1999
AET6538	TIE ROD END	OUT R/L	1978-2016
AFT2180	TIE ROD END	OUT R/L	1978-1999, 2001-2015
AFT2181	TIE ROD END	OUT R/L	1978-1999, 2006-2016
AFB2086	BALL JOINT	UP R/L	1978-1999



Ruitai	Description	Position	Years
AER8350	RACK END	R/L	1999-2016
AFR5049	RACK END	R/L	1999-2015
AET5070	TIE ROD END	OUT R/L	1999-2016
AET6538	TIE ROD END	OUT R/L	1978-2016
AFA4167	CONTROL ARM	UP R	1999-2016
AFA4168	CONTROL ARM	UP L	1999-2016
AFA4169	CONTROL ARM	LOW R	1999-2016
AFA4170	CONTROL ARM	LOW L	1999-2016
AFX7010	BUSH	R/L	1999-2016
AFX4876	BUSH		1999-2015
AFL5115	STABILIZER LINK	R/L	1999-2015
AFL4752	STABILIZER LINK	R	1997-2015
AFL4751	STABILIZER LINK	L	1997-2015
AFO4877	UNIVERSAL JOINT		1999-2015



Ruitai	Description	Position	Years
AER8350	RACK END	R/L	1999-2016
AFR5049	RACK END	R/L	1999-2015
AET5070	TIE ROD END	OUT R/L	1999-2016
AET6538	TIE ROD END	OUT R/L	1978-2016
AFT2180	TIE ROD END	OUT R/L	1978-1999, 2001-2015
AFA4167	CONTROL ARM	UP R	1999-2016
AFA4168	CONTROL ARM	UP L	1999-2016
AFA4169	CONTROL ARM	LOW R	1999-2016
AFA4170	CONTROL ARM	LOW L	1999-2016
AFX7010	BUSH	R/L	1999-2016
AFX4876	BUSH		1999-2015
AFL5115	STABILIZER LINK	R/L	1999-2015
AFL4752	STABILIZER LINK	R	1997-2015
AFL4751	STABILIZER LINK	L	1997-2015
AFO4877	UNIVERSAL JOINT		1999-2015

AFT2180



AFT2180



Ruitai	Description	Position	Years
AFT2180	TIE ROD END	OUT R/L	1978-1999, 2001-2015

AFT2180



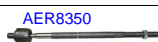
AFT2180



Ruitai	Description	Position	Years
AFT2180	TIE ROD END	OUT R/L	1978-1999, 2001-2015



Ruitai	Description	Position	Years
AER8350	RACK END	R/L	1999-2016
AET5070	TIE ROD END	OUT R/L	1999-2016
AET6538	TIE ROD END	OUT R/L	1978-2016
AFT2181	TIE ROD END	OUT R/L	1978-1999, 2006-2016
AFA4167	CONTROL ARM	UP R	1999-2016
AFA4168	CONTROL ARM	UP L	1999-2016
AFA4169	CONTROL ARM	LOW R	1999-2016
AFA4170	CONTROL ARM	LOW L	1999-2016
AFX7010	BUSH	R/L	1999-2016
AFX4876	BUSH		1999-2015
AFO4877	UNIVERSAL JOINT		1999-2015



Ruitai	Description	Position	Years
AER8350	RACK END	R/L	1999-2016
AET5070	TIE ROD END	OUT R/L	1999-2016
AET6538	TIE ROD END	OUT R/L	1978-2016
AFT2181	TIE ROD END	OUT R/L	1978-1999, 2006-2016
AFA4167	CONTROL ARM	UP R	1999-2016
AFA4168	CONTROL ARM	UP L	1999-2016
AFA4169	CONTROL ARM	LOW R	1999-2016
AFA4170	CONTROL ARM	LOW L	1999-2016
AFX7010	BUSH	R/L	1999-2016
AFX4876	BUSH		1999-2015
AFO4877	UNIVERSAL JOINT		1999-2015

AFR5049



AFR5049



AFL5115



AFL4751



AFL4752



AFL5115



Ruitai	Description	Position	Years
AFR5049	RACK END	R/L	1999-2015
AFL5115	STABILIZER LINK	R/L	1999-2015
AFL4752	STABILIZER LINK	R	1997-2015
AFL4751	STABILIZER LINK	L	1997-2015

AFR5049



AFR5049



AFL5115



AFL4751



AFL4752



AFL5115



Ruitai	Description	Position	Years
AFR5049	RACK END	R/L	1999-2015
AFL5115	STABILIZER LINK	R/L	1999-2015
AFL4752	STABILIZER LINK	R	1997-2015
AFL4751	STABILIZER LINK	L	1997-2015

AFR5049



AFR5049



AFX4876



Ruitai	Description	Position	Years
AFR5049	RACK END	R/L	1999-2015
AFX4876	BUSH		1999-2015
AFO4877	UNIVERSAL JOINT		1999-2015

AFR5049



AFR5049



AFX4876



AFL5115



AFL5115



Ruitai	Description	Position	Years
AFR5049	RACK END	R/L	1999-2015
AFX4876	BUSH		1999-2015
AFL5115	STABILIZER LINK	R/L	1999-2015
AFO4877	UNIVERSAL JOINT		1999-2015

AFR5049



AFR5049



AFX4876



AFL5115



AFL5115



Ruitai	Description	Position	Years
AFR5049	RACK END	R/L	1999-2015
AFX4876	BUSH		1999-2015
AFL5115	STABILIZER LINK	R/L	1999-2015
AFO4877	UNIVERSAL JOINT		1999-2015

AFR5049



AFR5049



AFX4876



Ruitai	Description	Position	Years
AFR5049	RACK END	R/L	1999-2015
AFX4876	BUSH		1999-2015
AFO4877	UNIVERSAL JOINT		1999-2015

AFR5049



AFR5049



AFX4876



Ruitai	Description	Position	Years
AFR5049	RACK END	R/L	1999-2015
AFX4876	BUSH		1999-2015
AFO4877	UNIVERSAL JOINT		1999-2015

AFR5049



AFR5049



AFX4876



AFL5115



AFL5115



Ruitai	Description	Position	Years
AFR5049	RACK END	R/L	1999-2015
AFX4876	BUSH		1999-2015
AFL5115	STABILIZER LINK	R/L	1999-2015
AFO4877	UNIVERSAL JOINT		1999-2015

IVECO DAILY PLATFORM CHASSIS 2007 - 2015

AFR5049



AFR5049



AFX4876



AFL5115



AFL5115



Ruitai	Description	Position	Years
AFR5049	RACK END	R/L	1999-2015
AFX4876	BUSH		1999-2015
AFL5115	STABILIZER LINK	R/L	1999-2015
AFO4877	UNIVERSAL JOINT		1999-2015

IVECO DAILY PLATFORM CHASSIS 2006 - 2011



AFR5049



AFR5049



AFL5115



AFL5115



Ruitai	Description	Position	Years
AFR5049	RACK END	R/L	1999-2015
AFL5115	STABILIZER LINK	R/L	1999-2015
AFO8938	OTHER	LOW R	2006-2012
AFO8939	OTHER	LOW L	2006-2012

AFR5049



AFR5049



AFL5115



AFL5115



Ruitai	Description	Position	Years
AFR5049	RACK END	R/L	1999-2015
AFL5115	STABILIZER LINK	R/L	1999-2015
AFO8938	OTHER	LOW R	2006-2012
AFO8939	OTHER	LOW L	2006-2012

AET9366



AET9380



AET3689



AET3690



AET9379



AET9366



AET3692



AET3693



Ruitai	Description	Position	Years
AET9366	TIE ROD END	OUT R/L	1969-2016
AET9379	TIE ROD END	OUT R	1963-2016
AET9380	TIE ROD END	OUT L	1963-2016
AET3689	TIE ROD END		1963-2016
AET3690	TIE ROD END		1963-2016
AET3692	TIE ROD END		1963-2016
AET3693	TIE ROD END		1963-2016

AET3689



AET3693



AET3692



Ruitai	Description	Position	Years
AET3689	TIE ROD END		1963-2016
AET3692	TIE ROD END		1963-2016
AET3693	TIE ROD END		1963-2016

AET3689



AET3693



AET3692



Ruitai	Description	Position	Years
AET3689	TIE ROD END		1963-2016
AET3692	TIE ROD END		1963-2016
AET3693	TIE ROD END		1963-2016

AET3689



AET3692



AET3693



AET3690



Ruitai	Description	Position	Years
AET3689	TIE ROD END		1963-2016
AET3690	TIE ROD END		1963-2016
AET3692	TIE ROD END		1963-2016
AET3693	TIE ROD END		1963-2016

AET3689



AET3692



AET3693



AET3690



Ruitai	Description	Position	Years
AET3689	TIE ROD END		1963-2016
AET3690	TIE ROD END		1963-2016
AET3692	TIE ROD END		1963-2016
AET3693	TIE ROD END		1963-2016

AET3688



AET3690



AET3692



AET3693



AET3691



AET3689



Ruitai	Description	Position	Years
AET3688	TIE ROD END		1963-2016
AET3689	TIE ROD END		1963-2016
AET3690	TIE ROD END		1963-2016
AET3691	TIE ROD END		1963-2016
AET3692	TIE ROD END		1963-2016
AET3693	TIE ROD END		1963-2016

AET3688



AET3690



AET3692



AET3693



AET3691



AET3689



Ruitai	Description	Position	Years
AET3688	TIE ROD END		1963-2016
AET3689	TIE ROD END		1963-2016
AET3690	TIE ROD END		1963-2016
AET3691	TIE ROD END		1963-2016
AET3692	TIE ROD END		1963-2016
AET3693	TIE ROD END		1963-2016

AET3688



AET3690



AET3692



AET3693



AET3691



AET3689



Ruitai	Description	Position	Years
AET3688	TIE ROD END		1963-2016
AET3689	TIE ROD END		1963-2016
AET3690	TIE ROD END		1963-2016
AET3691	TIE ROD END		1963-2016
AET3692	TIE ROD END		1963-2016
AET3693	TIE ROD END		1963-2016

AET3688



AET3690



AET3692



AET3693



AET3691



AET3689



Ruitai	Description	Position	Years
AET3688	TIE ROD END		1963-2016
AET3689	TIE ROD END		1963-2016
AET3690	TIE ROD END		1963-2016
AET3691	TIE ROD END		1963-2016
AET3692	TIE ROD END		1963-2016
AET3693	TIE ROD END		1963-2016

AET3688



AET3690



AET3692



AET3693



AET3691



AET3689



Ruitai	Description	Position	Years
AET3688	TIE ROD END		1963-2016
AET3689	TIE ROD END		1963-2016
AET3690	TIE ROD END		1963-2016
AET3691	TIE ROD END		1963-2016
AET3692	TIE ROD END		1963-2016
AET3693	TIE ROD END		1963-2016

AET3689



AET3692



AET3693



AET3690



Ruitai	Description	Position	Years
AET3689	TIE ROD END		1963-2016
AET3690	TIE ROD END		1963-2016
AET3692	TIE ROD END		1963-2016
AET3693	TIE ROD END		1963-2016

AET3689



AET3692



AET3693



AET3690



Ruitai	Description	Position	Years
AET3689	TIE ROD END		1963-2016
AET3690	TIE ROD END		1963-2016
AET3692	TIE ROD END		1963-2016
AET3693	TIE ROD END		1963-2016

AET3688



AET3691



Ruitai	Description	Position	Years
AET3688	TIE ROD END		1963-2016
AET3691	TIE ROD END		1963-2016

AET3688



AET3691



Ruitai	Description	Position	Years
AET3688	TIE ROD END		1963-2016
AET3691	TIE ROD END		1963-2016

AET3701



AET3702



Ruitai	Description	Position	Years
AET3701	TIE ROD END		1969-2016
AET3702	TIE ROD END		1969-2016

AET3701



AET3702



Ruitai	Description	Position	Years
AET3701	TIE ROD END		1969-2016
AET3702	TIE ROD END		1969-2016

AET3701



AET3702



Ruitai	Description	Position	Years
AET3701	TIE ROD END		1969-2016
AET3702	TIE ROD END		1969-2016

IVECO MK SERIES 1983 - 1991

AET9365



AET9366



AET3701



AET3702



AET9366



AET9365



Ruitai	Description	Position	Years
AET9365	TIE ROD END	OUT R/L	1983-1991
AET9366	TIE ROD END	OUT R/L	1969-2016
AET3701	TIE ROD END		1969-2016
AET3702	TIE ROD END		1969-2016

IVECO M SERIES 1983 - 1991

AET9365



AET9366



AET3701



AET3702



AET9366



AET9365



Ruitai	Description	Position	Years
AET9365	TIE ROD END	OUT R/L	1983-1991
AET9366	TIE ROD END	OUT R/L	1969-2016
AET3701	TIE ROD END		1969-2016
AET3702	TIE ROD END		1969-2016

IVECO M SERIES 1982 - 1992

AET9380



AET3688



AET3691



AET9379



Ruitai	Description	Position	Years
AET9379	TIE ROD END	OUT R	1963-2016
AET9380	TIE ROD END	OUT L	1963-2016
AET3688	TIE ROD END		1963-2016
AET3691	TIE ROD END		1963-2016

IVECO P 1982 - 1992

AET9380



AET3688



AET3691



AET9379



Ruitai	Description	Position	Years
AET9379	TIE ROD END	OUT R	1963-2016
AET9380	TIE ROD END	OUT L	1963-2016
AET3688	TIE ROD END		1963-2016
AET3691	TIE ROD END		1963-2016

IVECO P 1979 - 1993

AET3687



AET3690



AET3693



AET3692



AET3689



Ruitai	Description	Position	Years
AET3687	TIE ROD END		1979-1997
AET3689	TIE ROD END		1963-2016
AET3690	TIE ROD END		1963-2016
AET3692	TIE ROD END		1963-2016
AET3693	TIE ROD END		1963-2016

IVECO P/PA 1979 - 1993

AET3687



AET3690



AET3693



AET3692



AET3689



Ruitai	Description	Position	Years
AET3687	TIE ROD END		1979-1997
AET3689	TIE ROD END		1963-2016
AET3690	TIE ROD END		1963-2016
AET3692	TIE ROD END		1963-2016
AET3693	TIE ROD END		1963-2016

IVECO P/PA 1979 - 1986

AET3689



AET3692



AET3693



AET3690



Ruitai	Description	Position	Years
AET3689	TIE ROD END		1963-2016
AET3690	TIE ROD END		1963-2016
AET3692	TIE ROD END		1963-2016
AET3693	TIE ROD END		1963-2016

IVECO P/PA 1987 - 1992

AET3687



AET3690



AET3693



AET3692



AET3689



Ruitai	Description	Position	Years
AET3687	TIE ROD END		1979-1997
AET3689	TIE ROD END		1963-2016
AET3690	TIE ROD END		1963-2016
AET3692	TIE ROD END		1963-2016
AET3693	TIE ROD END		1963-2016

AET3689



AET3692



AET3693



AET3690



Ruitai	Description	Position	Years
AET3689	TIE ROD END		1963-2016
AET3690	TIE ROD END		1963-2016
AET3692	TIE ROD END		1963-2016
AET3693	TIE ROD END		1963-2016

AET3689



AET3692



AET3693



AET3690



Ruitai	Description	Position	Years
AET3689	TIE ROD END		1963-2016
AET3690	TIE ROD END		1963-2016
AET3692	TIE ROD END		1963-2016
AET3693	TIE ROD END		1963-2016

AET3687



Ruitai	Description	Position	Years
AET3687	TIE ROD END		1979-1997

IVECO P/PA-HAUBENFAHRZEUGE 1987 - 1993

AET3687



Ruitai	Description	Position	Years
AET3687	TIE ROD END		1979-1997

IVECO P/PA-HAUBENFAHRZEUGE 1979 - 1982

AET9366



AET9366



Ruitai	Description	Position	Years
AET9366	TIE ROD END	OUT R/L	1969-2016

IVECO P/PA-HAUBENFAHRZEUGE 1983 - 1986



AET9366



AET3689



AET3692



AET3693



AET3690



AET9366



Ruitai	Description	Position	Years
AET9366	TIE ROD END	OUT R/L	1969-2016
AET3689	TIE ROD END		1963-2016
AET3690	TIE ROD END		1963-2016
AET3692	TIE ROD END		1963-2016
AET3693	TIE ROD END		1963-2016

IVECO P/PA-HAUBENFAHRZEUGE 1987 - 1993



AET9366



AET3687



AET3690



AET3692



AET3689



AET9366



AET3693



Ruitai	Description	Position	Years
AET9366	TIE ROD END	OUT R/L	1969-2016
AET3687	TIE ROD END		1979-1997
AET3689	TIE ROD END		1963-2016
AET3690	TIE ROD END		1963-2016
AET3692	TIE ROD END		1963-2016
AET3693	TIE ROD END		1963-2016

IVECO STRALIS 1987 - 1993

AET9366



AET3687



AET3690



AET3692



AET3689



AET9366



AET3693



Ruitai	Description	Position	Years
AET9366	TIE ROD END	OUT R/L	1969-2016
AET3687	TIE ROD END		1979-1997
AET3689	TIE ROD END		1963-2016
AET3690	TIE ROD END		1963-2016
AET3692	TIE ROD END		1963-2016
AET3693	TIE ROD END		1963-2016

IVECO STRALIS 2002 - 2016

AET3688



AET3690



AET3692



AET3693



AET3691



AET3689



Ruitai	Description	Position	Years
AET3688	TIE ROD END		1963-2016
AET3689	TIE ROD END		1963-2016
AET3690	TIE ROD END		1963-2016
AET3691	TIE ROD END		1963-2016
AET3692	TIE ROD END		1963-2016
AET3693	TIE ROD END		1963-2016

AET3688



AET3690



AET3692



AET3693



AET3691



AET3689



Ruitai	Description	Position	Years
AET3688	TIE ROD END		1963-2016
AET3689	TIE ROD END		1963-2016
AET3690	TIE ROD END		1963-2016
AET3691	TIE ROD END		1963-2016
AET3692	TIE ROD END		1963-2016
AET3693	TIE ROD END		1963-2016

AET3689



AET3692



AET3693



AET3690



Ruitai	Description	Position	Years
AET3689	TIE ROD END		1963-2016
AET3690	TIE ROD END		1963-2016
AET3692	TIE ROD END		1963-2016
AET3693	TIE ROD END		1963-2016

AET3689



AET3692



AET3693



AET3690



Ruitai	Description	Position	Years
AET3689	TIE ROD END		1963-2016
AET3690	TIE ROD END		1963-2016
AET3692	TIE ROD END		1963-2016
AET3693	TIE ROD END		1963-2016

AET9380



AET3687



AET3690



AET3692



AET3689



AET9379



AET3693



Ruitai	Description	Position	Years
AET9379	TIE ROD END		1963-2016
AET9380	TIE ROD END	OUT R	1963-2016
AET3687	TIE ROD END	OUT L	1979-1997
AET3689	TIE ROD END		1963-2016
AET3690	TIE ROD END		1963-2016
AET3692	TIE ROD END		1963-2016
AET3693	TIE ROD END		1963-2016

AET9380



AET3687



AET3690



AET3692



AET3689



AET9379



AET3693



Ruitai	Description	Position	Years
AET9379	TIE ROD END		1963-2016
AET9380	TIE ROD END	OUT R	1963-2016
AET3687	TIE ROD END	OUT L	1979-1997
AET3689	TIE ROD END		1963-2016
AET3690	TIE ROD END		1963-2016
AET3692	TIE ROD END		1963-2016
AET3693	TIE ROD END		1963-2016

IVECO ZETA 1984 - 1993

AET9380



AET3687



AET3690



AET3692



AET3689



AET9379



AET3693



Ruitai	Description	Position	Years
AET9379	TIE ROD END		1963-2016
AET9380	TIE ROD END	OUT R	1963-2016
AET3687	TIE ROD END	OUT L	1979-1997
AET3689	TIE ROD END		1963-2016
AET3690	TIE ROD END		1963-2016
AET3692	TIE ROD END		1963-2016
AET3693	TIE ROD END		1963-2016

AET3701



AET3702



Ruitai	Description	Position	Years
AET3701	TIE ROD END		1969-2016
AET3702	TIE ROD END		1969-2016